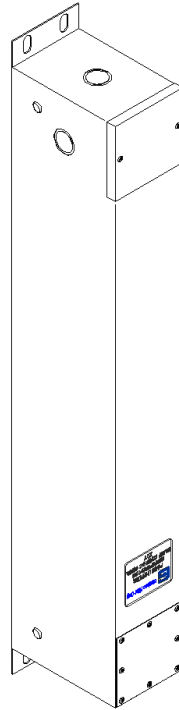




Power Line Filters

GF67920 High Performance Series Filter 100 dB from 14 kHz ~ 18 GHz



PANEL OPTIONS			
GFP78201	-4x	075	-00
PANEL MODEL	NUMBER OF FILTERS *	Current Rating (AMPS)	Add-Ons (Opt)***
	-2x -3x -4x		00-Standard 01-Legs 02-Lights 03-MOVs 04-Legs+ Lights 05-Legs+ MOV 06-Lights+MOV 07-Legs+ Light+MOV
* One filter per conductive path *** Crate for shipping included in all options			

Product Summary

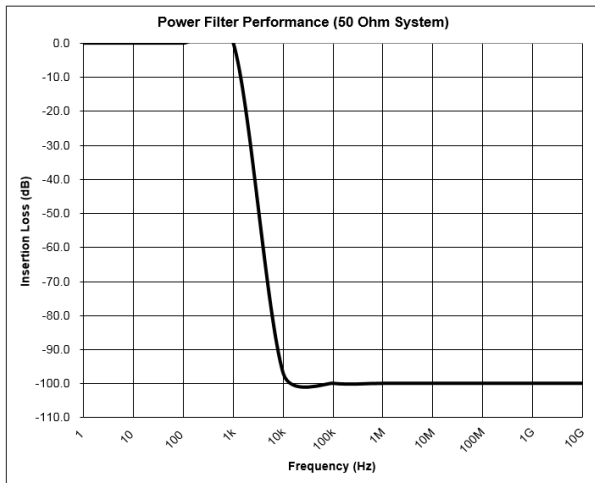
These EMI/RFI Power Line Filters are used to block unwanted signals and remove interference from entering or exiting through power lines for shielded rooms, SCIFS, screen rooms and many other forms of Faraday cages. It provides 100 dB protection against EMI interference from 14 kHz ~ 18 GHz.





FUNCTIONAL CHARACTERISTICS

- Voltage Ratings:
 - 24-1,000 VDC
 - 120/208 VAC (50/60 Hz)
 - 277/480 VAC (50/60 Hz)
- Voltage Drop:
 - 2% maximum at full rated unity power factor load.
- Harmonic Distortion:
 - 4% maximum at full rated unity power factor load
- Temperature Rating:
 - MIL-PRF-15733
- Current Overload:
 - 140% maximum current rating
- RF Radiation:
 - Greater than 100 dB isolation
- Dielectric With-Standing Voltage:
 - 2,200 VDC (prior to installation of discharge resistors)
- Insulation Resistance:
 - MIL-PRF-15733 (prior to installation of discharge resistors)
- Insertion loss:
 - 100 dB 14 kHz to 18 GHz
 - 50/50 Ohm System



*Representation of Insertion Loss Specifications

SPECIAL FEATURES

Filter(s)

- Low Pass filter circuits ~ passive components which includes inductors, capacitors, resistors and optional transient suppression devices
- Manufactured and tested per applicable portions of MIL-PRF-15733
- All circuits provided in single enclosure
- Discharge resistors incorporated to eliminate potential shock hazard

Enclosure

- Fabricated case of not less than 18 gauge cold rolled steel electro plated or painted Gray (Std. Paint Color)
- Sealed with welded and soldered seams for minimum shielding effectiveness 100 dB, 14 kHz to 18 GHz
- Double knock outs provided on filter case input
- Dual cover access to input and output terminals
- Mounting tab provided for easy wall mount options

Applicable Specifications

- Military Specifications
 - MIL-PRF-15733 General
- Military Test Methods
 - MIL-STD-202 Component Parts
 - MIL-STD-220 Insertion Loss
 - MIL-STD-285 Shielding Effectiveness
- NFPA 70/2011 National Electrical Code Standards

Available Options

- MOVs - EMP and Surge Suppressors
- Threaded pipe penetration available by request.
- Voltage Indicator Lights
- Ground Wire
- Internal Mounting Flange



GENISCO FILTER™
always on.™

Mechanical Dimensions

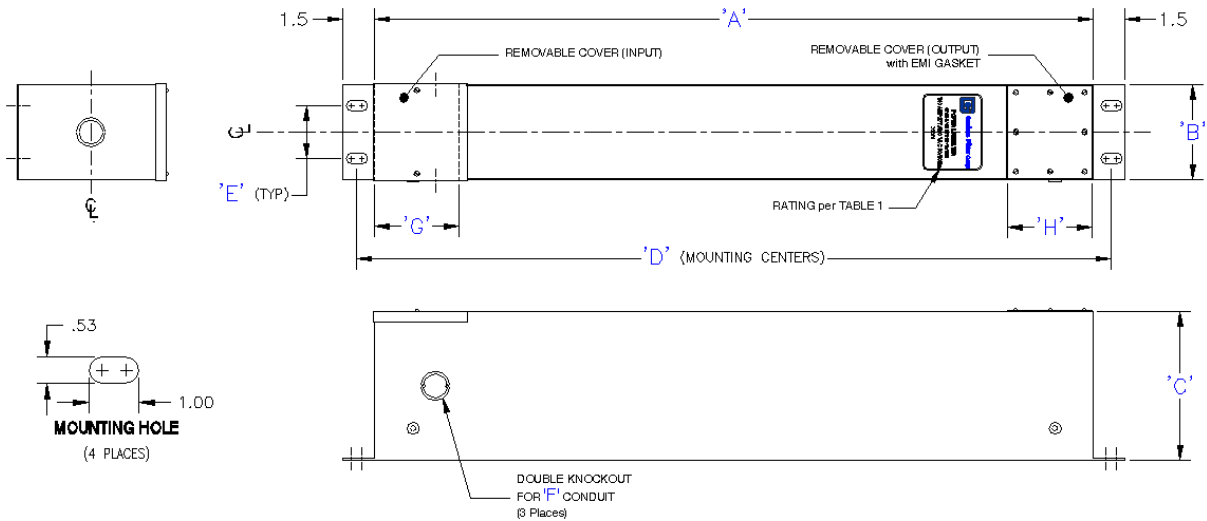


Table 1 Mechanical Dimensions

# of Filters & Max Current Rating	A	B	C	D	E	F	G	H	Approx Weight (lbs)
1x015	24	4.5	6	25.6	2	1 - 1¼	4	5	30
1x030	28	4.5	6	29.6	2	1 - 1¼	4	5	35
1x060	34	5	6	35.6	2	1 - 1¼	4	5	50
1x100	34	5	6	35.6	2	1 - 1¼	4	5	50
1x150	45	6	8	46.6	2	1 - 1¼	6	7	85
1x200	45	6	8	46.6	2	1 - 1¼	6	7	85
1x250	45	6	8	46.6	2	1 - 1¼	6	7	100
1x300	51	8	10	52.6	2	1¼ - 1½	6	7	150
1x400	51	8	10	52.6	2	1¼ - 1½	6	7	150
2x015	24	8	6	28.6	2	1 - 1¼	4	5	40
2x030	28	8	6	35.6	2	1 - 1¼	4	5	45
2x060	34	10	6	35.6	3	1 - 1¼	4	5	100
2x100	34	10	6	35.6	3	1 - 1¼	4	5	100
2x150	45	11	8	46.6	3	1¼ - 1½	6	7	125
3x015	24	11	6	24.6	3	1 - 1¼	4	5	55
3x030	28	11	6	28.6	3	1 - 1¼	4	5	55
3x060	34	15	6	35.6	3	1 - 1¼	4	5	75
3x100	34	15	6	35.6	3	1 - 1¼	4	5	80
4x015	24	14	6	24.6	3	1 - 1¼	4	5	70
4x030	28	14	6	28.6	3	1 - 1¼	4	5	75

*Other Circuit Configurations and Current Ratings Available Upon Request • Dimensions are in Inches



GENISCO FILTER™
always on.™